

**Shenzhen Most Technology Service Co., Limited**

No.5, Nangshan 2<sup>th</sup> Rd., North Hi-Tech Industrial park, Nanshan Shenzhen Guangdong, China

Tel:(86) 755-86026850

Http:// www.szmost.com

**Report No.: MTHN19080152**

Fax:(86) 755-26013350

Email: [szmost@szmost.com](mailto:szmost@szmost.com)

**Customer : SHENZHEN MARK TRADING CO., LTD.**

**Address : 6th Floor, Building A, DongFangYaYuan, Chen Tian Communities, Xixiang  
Bao'an District, Shenzhen, China**

Report on the submitted sample said to be

**Sample name : Wired gaming mouse**

**G958,M\*\*\*(\*\*stand for 0-9), G\*\*\*(\*\*stand for 0-9), M\*\*\*G(\*\*stand for 0-9),**

**Model name : M\*\*\*H(\*\*stand for 0-9), G\*\*\*H(\*\*stand for 0-9), GM-\*\*\*(\*\*stand for 0-9),  
GM-\*\*\*G(\*\*stand for 0-9), MO-\*\*\*(\*\*stand for 0-9), GM-\*\*\*(\*\*stand for 0-9)**

**Item/Lot No. : --**

**Material : --**

**Trademark : MARVO, XTRIKE ME, @ONE**

**Buyer : --**

**Supplier : --**

**Manufacturer : SHENZHEN MARK TRADING CO., LTD.**

**Address : 6th Floor, Building A, DongFangYaYuan, Chen Tian Communities, Xixiang  
Bao'an District, Shenzhen, China**

**Factory : SHENZHEN MARK TRADING CO., LTD.**

**Address : 6th Floor, Building A, DongFangYaYuan, Chen Tian Communities, Xixiang  
Bao'an District, Shenzhen, China**

**Date of receipt of test item: 2019-08-08**

**Date (s) of performance of tests: 2019-08-08 to 2019-08-12**

**RESULTS: (PASS)** Please refer to next page.

Based on the performed tests on submitted sample(s), the results of Lead, Mercury, Cadmium, Hexavalent chromium, Polybrominated biphenyls (PBBs), Polybrominated diphenyl ethers (PBDEs), DBP, BBP, DEHP, DIBP comply with the limits as set by RoHS Directive (EU) 2015/863 amending Annex II to Directive 2011/65/EU.

\*\*\*\*\*FOR FURTHER DETAILS, PLEASE REFER TO THE FOLLOWING PAGE (S) \*\*\*\*\*

**Signed for shenzhen Most Technology Service Co., Limited**

Written by:

*Ann*



Inspected by:

*Jack Chan*

Approved by:

*Yetter*

**Consolidation of Test Data**

No.	Test Sample	Test Data(ppm)	Limits	Remark:
1	Shell			
1-1	Black plastic	Cd: N.D. Pb: N.D. Hg: N.D. Cr <sup>6+</sup> : N.D. PBBs: N.D. PBDEs: N.D. DBP: ND BBP: ND DEHP:ND DIBP: ND	Cd: 0.01%(100mg/kg) Pb: 0.1%(1000mg/kg) Hg: 0.1%(1000mg/kg) Cr <sup>6+</sup> : 0.1%(1000mg/kg) PBBs: 0.1%(1000mg/kg) PBDEs: 0.1%(1000mg/kg) DBP: 0.1%(1000mg/kg) BBP: 0.1%(1000mg/kg) DEHP: 0.1%(1000mg/kg) DIBP: 0.1%(1000mg/kg)	--
1-2	Gray plastic	Cd: N.D. Pb: N.D. Hg: N.D. Cr <sup>6+</sup> : N.D. PBBs: N.D. PBDEs: N.D. DBP: ND BBP: ND DEHP:ND DIBP: ND	Cd: 0.01%(100mg/kg) Pb: 0.1%(1000mg/kg) Hg: 0.1%(1000mg/kg) Cr <sup>6+</sup> : 0.1%(1000mg/kg) PBBs: 0.1%(1000mg/kg) PBDEs: 0.1%(1000mg/kg) DBP: 0.1%(1000mg/kg) BBP: 0.1%(1000mg/kg) DEHP: 0.1%(1000mg/kg) DIBP: 0.1%(1000mg/kg)	--
2	Black plastic w/ white printing	Cd: N.D. Pb: N.D. Hg: N.D. Cr <sup>6+</sup> : N.D. PBBs: N.D. PBDEs: N.D. DBP: ND BBP: ND DEHP:ND DIBP: ND	Cd: 0.01%(100mg/kg) Pb: 0.1%(1000mg/kg) Hg: 0.1%(1000mg/kg) Cr <sup>6+</sup> : 0.1%(1000mg/kg) PBBs: 0.1%(1000mg/kg) PBDEs: 0.1%(1000mg/kg) DBP: 0.1%(1000mg/kg) BBP: 0.1%(1000mg/kg) DEHP: 0.1%(1000mg/kg) DIBP: 0.1%(1000mg/kg)	--
3	Screw	Cd: N.D. Pb: N.D. Hg: N.D. Cr <sup>6+</sup> : N.D. PBBs: N.D.	Cd: 0.01%(100mg/kg) Pb: 0.1%(1000mg/kg) Hg: 0.1%(1000mg/kg) Cr <sup>6+</sup> : 0.1%(1000mg/kg) PBBs: 0.1%(1000mg/kg)	--

		PBDEs: N.D. DBP: ND BBP: ND DEHP:ND DIBP: ND	PBDEs: 0.1%(1000mg/kg) DBP: 0.1%(1000mg/kg) BBP: 0.1%(1000mg/kg) DEHP: 0.1%(1000mg/kg) DIBP: 0.1%(1000mg/kg)	
4	Black plastic	Cd: N.D. Pb: N.D. Hg: N.D. Cr <sup>6+</sup> : N.D. PBBs: N.D. PBDEs: N.D. DBP: ND BBP: ND DEHP:ND DIBP: ND	Cd: 0.01%(100mg/kg) Pb: 0.1%(1000mg/kg) Hg: 0.1%(1000mg/kg) Cr <sup>6+</sup> : 0.1%(1000mg/kg) PBBs: 0.1%(1000mg/kg) PBDEs: 0.1%(1000mg/kg) DBP: 0.1%(1000mg/kg) BBP: 0.1%(1000mg/kg) DEHP: 0.1%(1000mg/kg) DIBP: 0.1%(1000mg/kg)	--
5	Black "PCB"	Cd: N.D. Pb: N.D. Hg: N.D. Cr <sup>6+</sup> : N.D. PBBs: N.D. PBDEs: N.D. DBP: ND BBP: ND DEHP:ND DIBP: ND	Cd: 0.01%(100mg/kg) Pb: 0.1%(1000mg/kg) Hg: 0.1%(1000mg/kg) Cr <sup>6+</sup> : 0.1%(1000mg/kg) PBBs: 0.1%(1000mg/kg) PBDEs: 0.1%(1000mg/kg) DBP: 0.1%(1000mg/kg) BBP: 0.1%(1000mg/kg) DEHP: 0.1%(1000mg/kg) DIBP: 0.1%(1000mg/kg)	--
6	Electrolysis electric capacity			
6-1	Silvery metal foil	Cd: N.D. Pb: N.D. Hg: N.D. Cr <sup>6+</sup> : N.D. PBBs: N.D. PBDEs: N.D. DBP: ND BBP: ND DEHP:ND DIBP: ND	Cd: 0.01%(100mg/kg) Pb: 0.1%(1000mg/kg) Hg: 0.1%(1000mg/kg) Cr <sup>6+</sup> : 0.1%(1000mg/kg) PBBs: 0.1%(1000mg/kg) PBDEs: 0.1%(1000mg/kg) DBP: 0.1%(1000mg/kg) BBP: 0.1%(1000mg/kg) DEHP: 0.1%(1000mg/kg) DIBP: 0.1%(1000mg/kg)	--
6-2	Silvery metal foil	Cd: N.D. Pb: N.D. Hg: N.D. Cr <sup>6+</sup> : N.D. PBBs: N.D. PBDEs: N.D.	Cd: 0.01%(100mg/kg) Pb: 0.1%(1000mg/kg) Hg: 0.1%(1000mg/kg) Cr <sup>6+</sup> : 0.1%(1000mg/kg) PBBs: 0.1%(1000mg/kg) PBDEs: 0.1%(1000mg/kg)	--

**Shenzhen Most Technology Service Co., Limited**

No.5, Nangshan 2<sup>th</sup> Rd., North Hi-Tech Industrial park, Nanshan Shenzhen Guangdong, China

Tel:(86) 755-86026850

Http:// www.szmost.com

**Report No.: MTHN19080152**

Fax:(86) 755-26013350

Email: [szmost@szmost.com](mailto:szmost@szmost.com)

		DBP: ND BBP: ND DEHP:ND DIBP: ND	DBP: 0.1%(1000mg/kg) BBP: 0.1%(1000mg/kg) DEHP: 0.1%(1000mg/kg) DIBP: 0.1%(1000mg/kg)	
6-3	Silvery metal	Cd: N.D. Pb: N.D. Hg: N.D. Cr <sup>6+</sup> : N.D. PBBs: N.D. PBDEs: N.D. DBP: ND BBP: ND DEHP:ND DIBP: ND	Cd: 0.01%(100mg/kg) Pb: 0.1%(1000mg/kg) Hg: 0.1%(1000mg/kg) Cr <sup>6+</sup> : 0.1%(1000mg/kg) PBBs: 0.1%(1000mg/kg) PBDEs: 0.1%(1000mg/kg) DBP: 0.1%(1000mg/kg) BBP: 0.1%(1000mg/kg) DEHP: 0.1%(1000mg/kg) DIBP: 0.1%(1000mg/kg)	--
6-4	Silvery metal pin	Cd: N.D. Pb: N.D. Hg: N.D. Cr <sup>6+</sup> : N.D. PBBs: N.D. PBDEs: N.D. DBP: ND BBP: ND DEHP:ND DIBP: ND	Cd: 0.01%(100mg/kg) Pb: 0.1%(1000mg/kg) Hg: 0.1%(1000mg/kg) Cr <sup>6+</sup> : 0.1%(1000mg/kg) PBBs: 0.1%(1000mg/kg) PBDEs: 0.1%(1000mg/kg) DBP: 0.1%(1000mg/kg) BBP: 0.1%(1000mg/kg) DEHP: 0.1%(1000mg/kg) DIBP: 0.1%(1000mg/kg)	--
6-5	Black rubber	Cd: N.D. Pb: N.D. Hg: N.D. Cr <sup>6+</sup> : N.D. PBBs: N.D. PBDEs: N.D. DBP: ND BBP: ND DEHP:ND DIBP: ND	Cd: 0.01%(100mg/kg) Pb: 0.1%(1000mg/kg) Hg: 0.1%(1000mg/kg) Cr <sup>6+</sup> : 0.1%(1000mg/kg) PBBs: 0.1%(1000mg/kg) PBDEs: 0.1%(1000mg/kg) DBP: 0.1%(1000mg/kg) BBP: 0.1%(1000mg/kg) DEHP: 0.1%(1000mg/kg) DIBP: 0.1%(1000mg/kg)	--
6-6	Black plastic tube	Cd: N.D. Pb: N.D. Hg: N.D. Cr <sup>6+</sup> : N.D. PBBs: N.D. PBDEs: N.D. DBP: ND BBP: ND DEHP:ND	Cd: 0.01%(100mg/kg) Pb: 0.1%(1000mg/kg) Hg: 0.1%(1000mg/kg) Cr <sup>6+</sup> : 0.1%(1000mg/kg) PBBs: 0.1%(1000mg/kg) PBDEs: 0.1%(1000mg/kg) DBP: 0.1%(1000mg/kg) BBP: 0.1%(1000mg/kg) DEHP: 0.1%(1000mg/kg)	--

		DIBP: ND	DIBP: 0.1%(1000mg/kg)	
6-7	White electrolyte	Cd: N.D. Pb: N.D. Hg: N.D. Cr <sup>6+</sup> : N.D. PBBs: N.D. PBDEs: N.D. DBP: ND BBP: ND DEHP:ND DIBP: ND	Cd: 0.01%(100mg/kg) Pb: 0.1%(1000mg/kg) Hg: 0.1%(1000mg/kg) Cr <sup>6+</sup> : 0.1%(1000mg/kg) PBBs: 0.1%(1000mg/kg) PBDEs: 0.1%(1000mg/kg) DBP: 0.1%(1000mg/kg) BBP: 0.1%(1000mg/kg) DEHP: 0.1%(1000mg/kg) DIBP: 0.1%(1000mg/kg)	--
7	Diode			
7-1	Black plastic body	Cd: N.D. Pb: N.D. Hg: N.D. Cr <sup>6+</sup> : N.D. PBBs: N.D. PBDEs: N.D. DBP: ND BBP: ND DEHP:ND DIBP: ND	Cd: 0.01%(100mg/kg) Pb: 0.1%(1000mg/kg) Hg: 0.1%(1000mg/kg) Cr <sup>6+</sup> : 0.1%(1000mg/kg) PBBs: 0.1%(1000mg/kg) PBDEs: 0.1%(1000mg/kg) DBP: 0.1%(1000mg/kg) BBP: 0.1%(1000mg/kg) DEHP: 0.1%(1000mg/kg) DIBP: 0.1%(1000mg/kg)	--
7-2	Silvery metal pin	Cd: N.D. Pb: N.D. Hg: N.D. Cr <sup>6+</sup> : N.D. PBBs: N.D. PBDEs: N.D. DBP: ND BBP: ND DEHP:ND DIBP: ND	Cd: 0.01%(100mg/kg) Pb: 0.1%(1000mg/kg) Hg: 0.1%(1000mg/kg) Cr <sup>6+</sup> : 0.1%(1000mg/kg) PBBs: 0.1%(1000mg/kg) PBDEs: 0.1%(1000mg/kg) DBP: 0.1%(1000mg/kg) BBP: 0.1%(1000mg/kg) DEHP: 0.1%(1000mg/kg) DIBP: 0.1%(1000mg/kg)	--
7-3	Transparent glass	Cd: N.D. Pb: N.D. Hg: N.D. Cr <sup>6+</sup> : N.D. PBBs: N.D. PBDEs: N.D. DBP: ND BBP: ND	Cd: 0.01%(100mg/kg) Pb: 0.1%(1000mg/kg) Hg: 0.1%(1000mg/kg) Cr <sup>6+</sup> : 0.1%(1000mg/kg) PBBs: 0.1%(1000mg/kg) PBDEs: 0.1%(1000mg/kg) DBP: 0.1%(1000mg/kg) BBP: 0.1%(1000mg/kg)	--

		DEHP:ND DIBP: ND	DEHP: 0.1%(1000mg/kg) DIBP: 0.1%(1000mg/kg)	
8	Multilayer ceramic capacitor			
8-1	Blue body	Cd: N.D. Pb: N.D. Hg: N.D. Cr <sup>6+</sup> : N.D. PBBs: N.D. PBDEs: N.D. DBP: ND BBP: ND DEHP:ND DIBP: ND	Cd: 0.01%(100mg/kg) Pb: 0.1%(1000mg/kg) Hg: 0.1%(1000mg/kg) Cr <sup>6+</sup> : 0.1%(1000mg/kg) PBBs: 0.1%(1000mg/kg) PBDEs: 0.1%(1000mg/kg) DBP: 0.1%(1000mg/kg) BBP: 0.1%(1000mg/kg) DEHP: 0.1%(1000mg/kg) DIBP: 0.1%(1000mg/kg)	--
8-2	Silvery metal pin	Cd: N.D. Pb: N.D. Hg: N.D. Cr <sup>6+</sup> : N.D. PBBs: N.D. PBDEs: N.D. DBP: ND BBP: ND DEHP:ND DIBP: ND	Cd: 0.01%(100mg/kg) Pb: 0.1%(1000mg/kg) Hg: 0.1%(1000mg/kg) Cr <sup>6+</sup> : 0.1%(1000mg/kg) PBBs: 0.1%(1000mg/kg) PBDEs: 0.1%(1000mg/kg) DBP: 0.1%(1000mg/kg) BBP: 0.1%(1000mg/kg) DEHP: 0.1%(1000mg/kg) DIBP: 0.1%(1000mg/kg)	--
9	Electrolytic capacitor			
9-1	Silvery metal pin	Cd: N.D. Pb: N.D. Hg: N.D. Cr <sup>6+</sup> : N.D. PBBs: N.D. PBDEs: N.D. DBP: ND BBP: ND DEHP:ND DIBP: ND	Cd: 0.01%(100mg/kg) Pb: 0.1%(1000mg/kg) Hg: 0.1%(1000mg/kg) Cr <sup>6+</sup> : 0.1%(1000mg/kg) PBBs: 0.1%(1000mg/kg) PBDEs: 0.1%(1000mg/kg) DBP: 0.1%(1000mg/kg) BBP: 0.1%(1000mg/kg) DEHP: 0.1%(1000mg/kg) DIBP: 0.1%(1000mg/kg)	--
9-2	Brown body	Cd: N.D. Pb: N.D. Hg: N.D. Cr <sup>6+</sup> : N.D. PBBs: N.D.	Cd: 0.01%(100mg/kg) Pb: 0.1%(1000mg/kg) Hg: 0.1%(1000mg/kg) Cr <sup>6+</sup> : 0.1%(1000mg/kg) PBBs: 0.1%(1000mg/kg)	--

		PBDEs: N.D. DBP: ND BBP: ND DEHP:ND DIBP: ND	PBDEs: 0.1%(1000mg/kg) DBP: 0.1%(1000mg/kg) BBP: 0.1%(1000mg/kg) DEHP: 0.1%(1000mg/kg) DIBP: 0.1%(1000mg/kg)	
10	Push-button switch			
10-1	White plastic	Cd: N.D. Pb: N.D. Hg: N.D. Cr <sup>6+</sup> : N.D. PBBs: N.D. PBDEs: N.D. DBP: ND BBP: ND DEHP:ND DIBP: ND	Cd: 0.01%(100mg/kg) Pb: 0.1%(1000mg/kg) Hg: 0.1%(1000mg/kg) Cr <sup>6+</sup> : 0.1%(1000mg/kg) PBBs: 0.1%(1000mg/kg) PBDEs: 0.1%(1000mg/kg) DBP: 0.1%(1000mg/kg) BBP: 0.1%(1000mg/kg) DEHP: 0.1%(1000mg/kg) DIBP: 0.1%(1000mg/kg)	--
10-2	Silvery metal	Cd: N.D. Pb: N.D. Hg: N.D. Cr <sup>6+</sup> : N.D. PBBs: N.D. PBDEs: N.D. DBP: ND BBP: ND DEHP:ND DIBP: ND	Cd: 0.01%(100mg/kg) Pb: 0.1%(1000mg/kg) Hg: 0.1%(1000mg/kg) Cr <sup>6+</sup> : 0.1%(1000mg/kg) PBBs: 0.1%(1000mg/kg) PBDEs: 0.1%(1000mg/kg) DBP: 0.1%(1000mg/kg) BBP: 0.1%(1000mg/kg) DEHP: 0.1%(1000mg/kg) DIBP: 0.1%(1000mg/kg)	--
10-3	Black body	Cd: N.D. Pb: N.D. Hg: N.D. Cr <sup>6+</sup> : N.D. PBBs: N.D. PBDEs: N.D. DBP: ND BBP: ND DEHP:ND DIBP: ND	Cd: 0.01%(100mg/kg) Pb: 0.1%(1000mg/kg) Hg: 0.1%(1000mg/kg) Cr <sup>6+</sup> : 0.1%(1000mg/kg) PBBs: 0.1%(1000mg/kg) PBDEs: 0.1%(1000mg/kg) DBP: 0.1%(1000mg/kg) BBP: 0.1%(1000mg/kg) DEHP: 0.1%(1000mg/kg) DIBP: 0.1%(1000mg/kg)	--
10-4	Silvery metal pin	Cd: N.D. Pb: N.D. Hg: N.D. Cr <sup>6+</sup> : N.D. PBBs: N.D. PBDEs: N.D.	Cd: 0.01%(100mg/kg) Pb: 0.1%(1000mg/kg) Hg: 0.1%(1000mg/kg) Cr <sup>6+</sup> : 0.1%(1000mg/kg) PBBs: 0.1%(1000mg/kg) PBDEs: 0.1%(1000mg/kg)	--

		DBP: ND BBP: ND DEHP:ND DIBP: ND	DBP: 0.1%(1000mg/kg) BBP: 0.1%(1000mg/kg) DEHP: 0.1%(1000mg/kg) DIBP: 0.1%(1000mg/kg)	
10-5	Silvery metal	Cd: N.D. Pb: N.D. Hg: N.D. Cr <sup>6+</sup> : N.D. PBBs: N.D. PBDEs: N.D. DBP: ND BBP: ND DEHP:ND DIBP: ND	Cd: 0.01%(100mg/kg) Pb: 0.1%(1000mg/kg) Hg: 0.1%(1000mg/kg) Cr <sup>6+</sup> : 0.1%(1000mg/kg) PBBs: 0.1%(1000mg/kg) PBDEs: 0.1%(1000mg/kg) DBP: 0.1%(1000mg/kg) BBP: 0.1%(1000mg/kg) DEHP: 0.1%(1000mg/kg) DIBP: 0.1%(1000mg/kg)	--
10-6	Black plastic	Cd: N.D. Pb: N.D. Hg: N.D. Cr <sup>6+</sup> : N.D. PBBs: N.D. PBDEs: N.D. DBP: ND BBP: ND DEHP:ND DIBP: ND	Cd: 0.01%(100mg/kg) Pb: 0.1%(1000mg/kg) Hg: 0.1%(1000mg/kg) Cr <sup>6+</sup> : 0.1%(1000mg/kg) PBBs: 0.1%(1000mg/kg) PBDEs: 0.1%(1000mg/kg) DBP: 0.1%(1000mg/kg) BBP: 0.1%(1000mg/kg) DEHP: 0.1%(1000mg/kg) DIBP: 0.1%(1000mg/kg)	--
11	Electronic wire	Cd: N.D. Pb: N.D. Hg: N.D. Cr <sup>6+</sup> : N.D. PBBs: N.D. PBDEs: N.D. DBP: ND BBP: ND DEHP:ND DIBP: ND	Cd: 0.01%(100mg/kg) Pb: 0.1%(1000mg/kg) Hg: 0.1%(1000mg/kg) Cr <sup>6+</sup> : 0.1%(1000mg/kg) PBBs: 0.1%(1000mg/kg) PBDEs: 0.1%(1000mg/kg) DBP: 0.1%(1000mg/kg) BBP: 0.1%(1000mg/kg) DEHP: 0.1%(1000mg/kg) DIBP: 0.1%(1000mg/kg)	--
12	Black body	Cd: N.D. Pb: N.D. Hg: N.D. Cr <sup>6+</sup> : N.D. PBBs: N.D. PBDEs: N.D. DBP: ND BBP: ND DEHP:ND	Cd: 0.01%(100mg/kg) Pb: 0.1%(1000mg/kg) Hg: 0.1%(1000mg/kg) Cr <sup>6+</sup> : 0.1%(1000mg/kg) PBBs: 0.1%(1000mg/kg) PBDEs: 0.1%(1000mg/kg) DBP: 0.1%(1000mg/kg) BBP: 0.1%(1000mg/kg) DEHP: 0.1%(1000mg/kg)	--



		DIBP: ND	DIBP: 0.1%(1000mg/kg)	
13	USB plug			
13-1	Black plastic	Cd: N.D. Pb: N.D. Hg: N.D. Cr <sup>6+</sup> : N.D. PBBs: N.D. PBDEs: N.D. DBP: ND BBP: ND DEHP:ND DIBP: ND	Cd: 0.01%(100mg/kg) Pb: 0.1%(1000mg/kg) Hg: 0.1%(1000mg/kg) Cr <sup>6+</sup> : 0.1%(1000mg/kg) PBBs: 0.1%(1000mg/kg) PBDEs: 0.1%(1000mg/kg) DBP: 0.1%(1000mg/kg) BBP: 0.1%(1000mg/kg) DEHP: 0.1%(1000mg/kg) DIBP: 0.1%(1000mg/kg)	--
13-2	Silvery metal	Cd: N.D. Pb: N.D. Hg: N.D. Cr <sup>6+</sup> : N.D. PBBs: N.D. PBDEs: N.D. DBP: ND BBP: ND DEHP:ND DIBP: ND	Cd: 0.01%(100mg/kg) Pb: 0.1%(1000mg/kg) Hg: 0.1%(1000mg/kg) Cr <sup>6+</sup> : 0.1%(1000mg/kg) PBBs: 0.1%(1000mg/kg) PBDEs: 0.1%(1000mg/kg) DBP: 0.1%(1000mg/kg) BBP: 0.1%(1000mg/kg) DEHP: 0.1%(1000mg/kg) DIBP: 0.1%(1000mg/kg)	--
13-3	Lead Plating	Cd: N.D. Pb: N.D. Hg: N.D. Cr <sup>6+</sup> : N.D. PBBs: N.D. PBDEs: N.D. DBP: ND BBP: ND DEHP:ND DIBP: ND	Cd: 0.01%(100mg/kg) Pb: 0.1%(1000mg/kg) Hg: 0.1%(1000mg/kg) Cr <sup>6+</sup> : 0.1%(1000mg/kg) PBBs: 0.1%(1000mg/kg) PBDEs: 0.1%(1000mg/kg) DBP: 0.1%(1000mg/kg) BBP: 0.1%(1000mg/kg) DEHP: 0.1%(1000mg/kg) DIBP: 0.1%(1000mg/kg)	--
13-4	Black body w/ silvery metal pin (mixed)	Cd: N.D. Pb: N.D. Hg: N.D. Cr <sup>6+</sup> : N.D. PBBs: N.D. PBDEs: N.D. DBP: ND BBP: ND	Cd: 0.01%(100mg/kg) Pb: 0.1%(1000mg/kg) Hg: 0.1%(1000mg/kg) Cr <sup>6+</sup> : 0.1%(1000mg/kg) PBBs: 0.1%(1000mg/kg) PBDEs: 0.1%(1000mg/kg) DBP: 0.1%(1000mg/kg) BBP: 0.1%(1000mg/kg)	--

		DEHP:ND DIBP: ND	DEHP: 0.1%(1000mg/kg) DIBP: 0.1%(1000mg/kg)	
14	Gray PCB	Cd: N.D. Pb: N.D. Hg: N.D. Cr <sup>6+</sup> : N.D. PBBs: N.D. PBDEs: N.D. DBP: ND BBP: ND DEHP:ND DIBP: ND	Cd: 0.01%(100mg/kg) Pb: 0.1%(1000mg/kg) Hg: 0.1%(1000mg/kg) Cr <sup>6+</sup> : 0.1%(1000mg/kg) PBBs: 0.1%(1000mg/kg) PBDEs: 0.1%(1000mg/kg) DBP: 0.1%(1000mg/kg) BBP: 0.1%(1000mg/kg) DEHP: 0.1%(1000mg/kg) DIBP: 0.1%(1000mg/kg)	--
15	Black PCB	Cd: N.D. Pb: N.D. Hg: N.D. Cr <sup>6+</sup> : N.D. PBBs: N.D. PBDEs: N.D. DBP: ND BBP: ND DEHP:ND DIBP: ND	Cd: 0.01%(100mg/kg) Pb: 0.1%(1000mg/kg) Hg: 0.1%(1000mg/kg) Cr <sup>6+</sup> : 0.1%(1000mg/kg) PBBs: 0.1%(1000mg/kg) PBDEs: 0.1%(1000mg/kg) DBP: 0.1%(1000mg/kg) BBP: 0.1%(1000mg/kg) DEHP: 0.1%(1000mg/kg) DIBP: 0.1%(1000mg/kg)	--
16	White watermark	Cd: N.D. Pb: N.D. Hg: N.D. Cr <sup>6+</sup> : N.D. PBBs: N.D. PBDEs: N.D. DBP: ND BBP: ND DEHP:ND DIBP: ND	Cd: 0.01%(100mg/kg) Pb: 0.1%(1000mg/kg) Hg: 0.1%(1000mg/kg) Cr <sup>6+</sup> : 0.1%(1000mg/kg) PBBs: 0.1%(1000mg/kg) PBDEs: 0.1%(1000mg/kg) DBP: 0.1%(1000mg/kg) BBP: 0.1%(1000mg/kg) DEHP: 0.1%(1000mg/kg) DIBP: 0.1%(1000mg/kg)	--
17	Silver metal	Cd: N.D. Pb: N.D. Hg: N.D. Cr <sup>6+</sup> : N.D. PBBs: N.D. PBDEs: N.D. DBP: ND BBP: ND DEHP:ND DIBP: ND	Cd: 0.01%(100mg/kg) Pb: 0.1%(1000mg/kg) Hg: 0.1%(1000mg/kg) Cr <sup>6+</sup> : 0.1%(1000mg/kg) PBBs: 0.1%(1000mg/kg) PBDEs: 0.1%(1000mg/kg) DBP: 0.1%(1000mg/kg) BBP: 0.1%(1000mg/kg) DEHP: 0.1%(1000mg/kg) DIBP: 0.1%(1000mg/kg)	--

**Shenzhen Most Technology Service Co., Limited**

No.5, Nangshan 2<sup>th</sup> Rd., North Hi-Tech Industrial park, Nanshan Shenzhen Guangdong, China

Tel:(86) 755-86026850

Http:// www.szmost.com

**Report No.: MTHN19080152**

Fax:(86) 755-26013350

Email: [szmost@szmost.com](mailto:szmost@szmost.com)

**Note:**

-N.D. = not detected (<5ppm)

-N.A. = not applicable

- “▼”= The sample is negative for Cr(VI) – The Cr(VI) concentration is below 0.10 µg/cm<sup>2</sup>. The coating is considered a non-Cr(VI) based coating.

“#” = copper alloy. The lead content which is under 4% (40000ppm) is exempted from the requirement of RoHS Directive 2011/65/EU (RoHS)

“PBBs”=Contains: Monobromobiphenyl; Dibromobiphenyl; Tribromobiphenyl; Tetrabromobiphenyl; Pentabromobiphenyl; Hexabromobiphenyl; Heptabromobiphenyl; Octabromobiphenyl; Nonabromobiphenyl; Decabromobiphenyl.

“PBDEs”= Contains: Monobromodiphenyl ether; Dibromodiphenyl ether; Tribromodiphenyl ether; Tetrabromodiphenyl ether; Pentabromodiphenyl ether; Hexabromodiphenyl ether; Heptabromodiphenyl ether; Octabromodiphenyl ether; Nonabromodiphenyl ether; Decabromodiphenyl ether..;

Not directed is reported when the reading is less than detection limit value.

- 1) This report is not a formal test report but only consolidating the test data listed above;
- 2) The above test report of raw material which is not issued by MOST is offered by the applicant as a reference of consolidated data;
- 3) MOST has not conducted any verification on the test data in the above test report that is not issued by MOST.
- 4) This report can not be issued repeatedly unless there is a written approval by the lab.

**Shenzhen Most Technology Service Co., Limited**

No.5, Nangshan 2<sup>th</sup> Rd., North Hi-Tech Industrial park, Nanshan Shenzhen Guangdong, China

Tel:(86) 755-86026850

Http:// [www.szmost.com](http://www.szmost.com)

**Report No.: MTHN19080152**

Fax:(86) 755-26013350

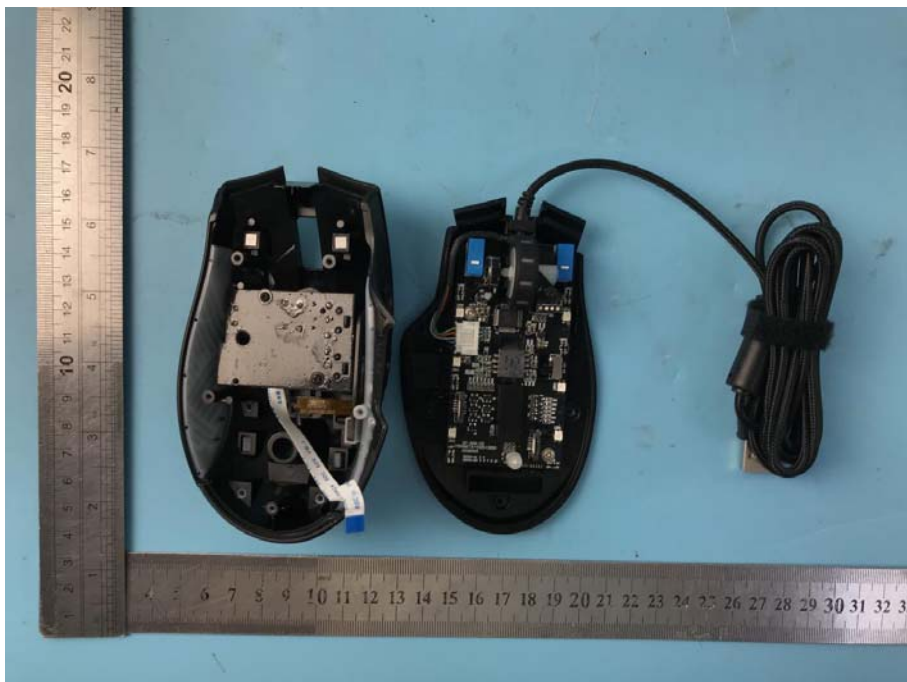
Email: [szmost@szmost.com](mailto:szmost@szmost.com)

# **APPENDIX I**

## **(Photos of the Sample)**

## Appendix 1

### Front views of “ Wired gaming mouse ”



----- End of report -----